

SEASON 74!

2024-2025



The
**Seussification
of Romeo
and Juliet**



Godspell

Rodgers +
Hammerstein's

Cinderella



**The Glass
Menagerie**



**A Tuna
Christmas**



**Daddy
Long
Legs**



Clue
On Stage



**The
SpongeBob
Musical**

**OCALA
CIVIC
THEATRE**

4337 E. Silver Springs Blvd. Ocala, FL 34470
(352) 236-2274 • ocalacivictheatre.com

JOIN US FOR SEASON 74!

This season at OCT, we have six Mainstage shows to charm and delight you: **Rodgers + Hammerstein's Cinderella**, **The Glass Menagerie**, **A Tuna Christmas**, **Daddy Long Legs**, **Clue: On Stage**, and **The SpongeBob Musical**.

All shows except **A Tuna Christmas** run for three weeks. Performances are Thursdays at 7:30 p.m., Fridays at 7:30 p.m., Saturdays at 2 p.m. and 7:30 p.m., and Sundays at 2 p.m. **A Tuna Christmas** runs for two weeks and adds Wednesday performances at 7:30 p.m. to the regular show schedule.



ASL-interpreted performances are on the third Thursday. For **A Tuna Christmas**, the ASL-interpreted performance is on the second Thursday.

ARTS FOR ALL

The Academy's Arts For All summer youth productions are a delightful beginning to Season 74! **The Seussification of Romeo and Juliet** runs July 14-16, with three performances: Sunday at 2 p.m., Monday at 7:30 p.m., and Tuesday at 7:30 p.m. **Godspell** runs July 19-21, with three performances: Friday at 7:30 p.m., Saturday at 2 p.m., and Sunday at 2 p.m. Subscribers can purchase tickets in advance at a discount.

SINGLE TICKETS

- OCT Mainstage: \$35 for adults / \$17 for ages 18 and younger
- Arts For All: \$20 for adults / \$12 for ages 18 and younger

On-sale dates are listed with each show. Once tickets are on sale to the public, you can buy online at any time at www.ocalacivictheatre.com.

GROUP SALES

Groups of 10 or more can purchase tickets as early as one month before a show goes on sale to the general public.

- 10-20 tickets: \$2 off per ticket for evenings and \$2 off per ticket for matinees
- 21-30 tickets: \$4 off per ticket for evenings and \$2 off per ticket for matinees
- 31-40 tickets: \$4 off per ticket for evenings and \$2 off per ticket for matinees, PLUS one free ticket
- 41 or more tickets: \$4 off per ticket for evenings and \$2 off per ticket for matinees, PLUS two free tickets

SUBSCRIPTIONS



Every subscription option gives you a discount over single-ticket prices!

- SIX SHOWS:** \$180 (Standing Reservation, with a Flex Pass for *A Tuna Christmas*, OR a Flex Pass for all six shows)
- FIVE SHOWS:** \$155 (Flex Pass only)
- THREE SHOWS:** \$96 (Flex Pass only)

What's a Standing Reservation? A Standing Reservation gives you a regular performance day and the same seats for each show. When you fill out the order form in this brochure, you can state your preferred day and seating area. Every effort will be made to place you in the section you request. Priority in seat assignment for OCT Mainstage shows is based on length of subscription and donor history. Please send in your order forms and payment as soon as possible, since priority for new subscribers is determined by the date your order was received and your donor category. Reservation and ticketing procedures are subject to change.

What's a Flex Pass? With a Flex Pass, you decide which shows you want to see and which performance of each one you want to attend. Then, beginning August 5, you can call or stop by the box office to make reservations for each show in your subscription.

TICKET POLICIES

How do I buy tickets? To buy single tickets online at any time, visit ocalacivictheatre.com. To buy tickets over the phone or in person, call the box office at (352) 236-2274 or stop by Monday through Friday, 10 a.m. to 2 p.m. To purchase season tickets, please fill out the order form in this brochure and return or mail it to the theatre.

How do I get my tickets? Physical tickets will not be printed. You will receive an e-mail confirmation of your reservations for your records. When you come to a performance, we will check you in by name.

Can I exchange my tickets for another date? We are happy to exchange your tickets for another performance of the same show with at least 24 hours' notice before your scheduled performance, based on availability. Please contact the box office during our regular business hours, or e-mail your request to exchange@ocalacivictheatre.com. A \$5 fee per ticket applies if you exchange with less than 24 hours' notice or for missed performances.

Can I get a refund? OCT has a no refunds policy for all ticket purchases. All sales are final. If a performance is canceled, the box office will contact you with ticket options.

Reservation and ticketing procedures are subject to change.

CREATING FOR OUR COMMUNITY

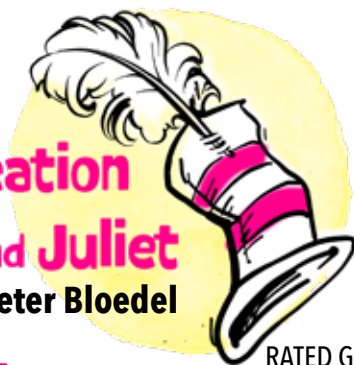
PLEASE NOTE: OCT does not discriminate on the basis of race, color, national origin, religion, gender, age, disability, veteran status, sexual orientation, gender identity, stage production content, or subject matter. The theatre works to promote, encourage, and advocate for an all-inclusive, supportive theatre environment among all participants, both on stage and off. And, while OCT makes every effort to advise our audiences about subject matter, sensitivities vary from person to person. If you have any questions about content, age-appropriateness, or stage effects (such as strobe lights or theatrical fog) which might affect patron comfort, please contact the box office at (352) 236-2274.



FALL HARD FOR THE BARD

The Seussification of Romeo and Juliet

By Peter Bloedel



RATED G

July 14-16, 2024

The Capitulates and the Monotones feel about each other the way Sam-I-Am feels about green eggs and ham. But in spite of their feuding families, star-crossed youngsters Romeo and Juliet love each other like the Cat in the Hat loves trouble. Sublimely silly, this whimsical reinvention of Shakespeare's romantic tale – as told by Thing One and Thing Two, in rhyming couplets – is a lot more magical than tragical. Oh, the laughs you will laugh when Seuss is on the loose in Verona!

JULY 2024 Sun. 14 2 p.m. Mon. 15 7:30 p.m. Tues. 16 7:30 p.m.

SUBSCRIBER RESERVATIONS: June 10, 2024 • ON SALE: June 17, 2024



GET IN THE SPIRIT

Godspell

RATED G



Conceived and Originally Directed by John-Michael Tebelak
Music and New Lyrics by Stephen Schwartz

Originally Produced on the New York Stage by Edgar Lansbury / Stuart Duncan / Joseph Beruh

July 19-21, 2024

Prepare ye the way for this timeless tale of faith and friendship! Based on the Gospel According to St. Matthew, this inspirational musical about Jesus and his disciples stirs the soul with parables of loyalty and love. Beloved songs like "All For the Best," "Day By Day," "By My Side," "Light of the World," and "All Good Gifts" have been lifting spirits for decades. Whether for the first time or all over again, blessed are they who experience the joy of this classic!

JULY 2024 Fri. 19 7:30 p.m. Sat. 20 2 p.m. Sun. 21 2 p.m.

SUBSCRIBER RESERVATIONS: June 10, 2024 • ON SALE: June 17, 2024

IF THE SHOE FITS...

Rodgers +
Hammerstein's
Cinderella

Music by Richard Rodgers
Lyrics by Oscar Hammerstein II
New Book by Douglas Carter Beane
Original Book by Oscar Hammerstein II



RATED G

September 5-22, 2024

Poor Ella, overworked and mistreated by her stepmother and stepsisters. When a royal ball is announced – to find a bride for the prince! – could she ever dream of attending? Nothing's impossible in a fairytale, especially when you have a magical godmother on your side. As lovely as a glass slipper in the moonlight, this fresh and funny spin on the classic 1957 musical breathes new life into "once upon a time..." You'll fall in love with this charming romantic fantasy long before the stroke of midnight.

SEPTEMBER 2024

Thurs.

Fri.

Sat.

Sun.

5

6

7

8

12

13

14

15

19

20

21

22

Thursdays at 7:30 p.m. • Fridays at 7:30 p.m. • Saturdays at 2 p.m. & 7:30 p.m. • Sundays at 2 p.m.

FLEX PASS/EXCHANGES: August 5, 2024 • ON SALE: August 12, 2024

IF MEMORY SERVES...

The Glass Menagerie



RATED PG

By Tennessee Williams

November 7-24, 2024

In 1930s St. Louis, faded Southern belle Amanda Wingfield lives in poverty with her two grown children. Son Tom has unwillingly supported the family since his father abandoned them. Daughter Laura, as fragile as her collection of glass animals, is crippled by shyness and a limp. He seeks escape in alcohol and movies, while she withdraws into music. But when a "gentleman caller" visits their dingy apartment, the family's world of illusions is shattered. Tender and tragic, this ethereal memory play is a classic of American theatre.

NOVEMBER 2024

Thurs.

Fri.

Sat.

Sun.

7

8

9

10

14

15

16

17

21

22

23

24

Thursdays at 7:30 p.m. • Fridays at 7:30 p.m. • Saturdays at 2 p.m. & 7:30 p.m. • Sundays at 2 p.m.

FLEX PASS/EXCHANGES: August 5, 2024 • ON SALE: October 7, 2024

2024-2025 NEW SUBSCRIBER ORDER FORM

Let us walk you through the next four pages step by step!
Please fill out the following on your order form.



TEAR HERE

STEP 1: Contact Information

STEP 2: Select Your Subscription

STEP 3: Arts For All Tickets

STEP 4: Donation Option

STEP 5: Payment

STEP 6: Tear out your order form and return it, with payment, to the OCT box office, or mail it to:

Ocala Civic Theatre, 4337 E. Silver Springs Blvd., Ocala, Florida 34470

SUBSCRIBE AND SAVE!

You'll receive a letter confirming your subscription the first week of August.

REMINDER: Flex Pass reservations and exchanges begin August 5 for ALL shows in your subscription. Subscribers who purchase advance tickets for *The Seussification of Romeo and Juliet* or *Godspell* can make their reservations for those shows beginning June 10. If you have questions or need assistance filling out this form, please contact the box office at (352) 236-2274 or stop by Monday through Friday, 10 a.m. to 2 p.m.

STEP 1: CONTACT INFORMATION

Name _____
(first and last name)

Address _____

City _____ State _____ Zip Code _____

Phone Numbers _____ or _____

E-Mail Address _____

(We need your e-mail address because we no longer print tickets. Instead, we send you an e-mail confirmation of your reservations for your records.)

I'd like to be added to the free OCT e-mail list.

STEP 2: SELECT YOUR SUBSCRIPTION

6 ALL SIX SHOWS, STANDING RESERVATION: \$180

- Standing Reservation for *Rodgers + Hammerstein's Cinderella*, *The Glass Menagerie*, *Daddy Long Legs*, *Clue: On Stage*, and *The SpongeBob Musical*, with a Flex Pass for *A Tuna Christmas*

What day of the week? (i.e. opening night, any Thursday evening, 2nd Saturday matinee, any evening, etc.)

Where would you like to sit? (i.e. closer to the front, right side, etc.)

For details on the Standing Reservation schedule, see the inside back cover.

6 ALL SIX SHOWS, FLEX PASS: \$180

- Flex Pass for all six OCT Mainstage shows

5 FIVE-SHOW FLEX PASS: \$155

- Flex Pass for any five OCT Mainstage shows of your choosing

3 THREE-SHOW FLEX PASS: \$96

- Flex Pass for any three OCT Mainstage shows of your choosing

For how many people? _____ Total \$ _____

STEP 3: ARTS FOR ALL TICKETS

If you'd like to add tickets to our Arts For All summer youth productions to your subscription, you'll receive a discount off each ticket. Beginning June 10, one week before tickets go on sale to the general public, you can make your advance reservations for these shows.

THE SEUSSIFICATION OF ROMEO & JULIET

_____ adult tickets at \$18

_____ youth (18 and younger) tickets at \$10

GODSPELL

_____ adult tickets at \$18

_____ youth (18 and younger) tickets at \$10

Arts For All total \$ _____

STEP 4: WOULD YOU LIKE TO ADD A DONATION?

We sincerely appreciate the donations which many of our patrons include with their season subscriptions. Since ticket income provides only a portion of our operating costs, these donations help us to continue providing quality entertainment and programs for our community. Donations are tax-deductible and also provide you with special benefits.

- Friend (\$30-\$59)** Listing in program
- Sustainer (\$60-\$124)** Benefit listed above, plus early ticket sales
- VIP (\$125-\$299)** Benefits listed above, plus rehearsal pass
- Co-Star (\$300-\$499)** Benefits listed above, plus complimentary concessions
- Celebrity (\$500-\$799)** Benefits listed above, plus invitation to donor celebration
- Benefactor (\$800-\$1,099)** Benefits listed above, plus listing on TV screens in lobby
- Producer (\$1,100-\$2,499)** Benefits listed above, plus private backstage tour
- Executive Producer (\$2,500+)** Benefits listed above, plus two extra single tickets to any one of the Season 74 Mainstage productions

Ocala Civic Theatre, Inc. is a non-profit corporation under the Internal Revenue Code section 501(c)(3). Our Federal Tax I.D. number is 23-7101051. Donations over the cost of a season ticket are tax-deductible within the limits allowed by law. A COPY OF THE OFFICIAL REGISTRATION AND FINANCIAL INFORMATION MAY BE OBTAINED FROM THE DIVISION OF CONSUMER SERVICES BY CALLING TOLL-FREE 1-800-HELP-FLA OR ONLINE AT www.FloridaConsumerHelp.com. REGISTRATION DOES NOT IMPLY ENDORSEMENT, APPROVAL, OR RECOMMENDATION BY THE STATE. REGISTRATION #: CH 14123

In addition to my season tickets, I'd like to support OCT with a tax-deductible donation:

- \$2,500 \$1,100 \$800 \$500 \$300
 \$125 \$60 \$30 Other: \$ _____

Donation Total: \$ _____

Donors, please enter your name EXACTLY as you want it to appear in our playbill:

-
- I would like my donation to remain anonymous.
 - Matching Gifts:** I work for/am retired from a company which may match my donation. Please contact me.

THANK YOU FOR YOUR GENEROSITY AND SUPPORT OF OCT!

PLEASE NOTE:

You are the only person who can make your ticket reservations and exchanges, unless you authorize someone else to do so. Would you like to authorize anyone else to make ticket reservations and exchanges on your behalf for Season 74? If so, please share their name and phone number:

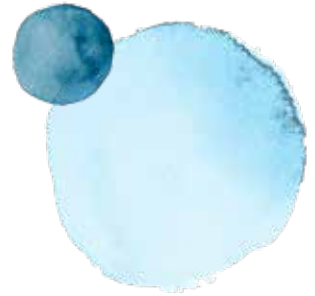
TOTALS

Total from Step 2 (Subscription) \$ _____

Total from Step 3 (Arts For All) \$ _____

Total from Step 4 (Donation) \$ _____

GRAND TOTAL \$ _____



STEP 5: PAYMENT

Ocala Civic Theatre has a no refunds policy for all ticket purchases. All sales are final.

- Check enclosed in the amount of \$ _____
- Charge to my credit card \$ _____



Billing Information (if different than contact information)

Address _____

City _____ State _____ Zip Code _____

Signature _____

Credit Card # _____

Exp. _____ CVV _____

BRAVO! YOU'RE DONE!

Y'ALLTIDE GREETINGS!

A Tuna Christmas



RATED PG

By Ed Howard, Joe Sears, and Jaston Williams

December 4-15, 2024

It's Christmas in Tuna – the third-smallest town in Texas. The radio is abuzz with news of the Yuletide yard display competition (vandalized by a shady "phantom"), while unpaid electric bills jeopardize a production of *A Christmas Carol*. Two versatile actors – Scott Fitzgerald (*The Velocity of Autumn, Outside Mullingar*) and Greg Thompson (OCT Executive & Artistic Director) – play 20 zany characters in this lightning-fast comedy as broad as the Rio Grande. Everything's bigger in Texas, including the holiday hilarity. This Southern-fried fruitcake is a gift for all seasons!

DECEMBER 2024

Wed.

Thurs.

Fri.

Sat.

Sun.

4

5

6

7

8

11

12

13

14

15

Wednesdays at 7:30 p.m. • Thursdays at 7:30 p.m. • Fridays at 7:30 p.m.
Saturdays at 2 p.m. & 7:30 p.m. • Sundays at 2 p.m.

FLEX PASS/EXCHANGES: August 5, 2024 • ON SALE: November 4, 2024

SINCERELY YOURS

Daddy Long Legs

RATED G



Music and Lyrics by Paul Gordon

Book by John Caird

Based on the novel by Jean Webster

February 6-23, 2025

Raised in a New England orphanage, Jerusha Abbott has just come of age. She laments her lonely life until she learns that a mysterious benefactor, intrigued by her essays, is sending her to college. The conditions: She must become a writer, and she must write letters to him – which he will never answer. All she knows of this shy philanthropist is his tall, long-legged shadow she once glimpsed. Based on the 1955 film with Fred Astaire and Leslie Caron, this clever two-person musical reveals the secret of happiness.

FEBRUARY 2025

Thurs.

Fri.

Sat.

Sun.

6

7

8

9

13

14

15

16

20

21

22

23

Thursdays at 7:30 p.m. • Fridays at 7:30 p.m. • Saturdays at 2 p.m. & 7:30 p.m. • Sundays at 2 p.m.

FLEX PASS/EXCHANGES: August 5, 2024 • ON SALE: January 6, 2025

ARE YOU GAME?

Clue

On Stage



Adapted from the screenplay by Jonathan Lynn

Written by Sandy Rustin

Additional material by Hunter Foster & Eric Price

Adapted from the Paramount Pictures film written by Jonathan Lynn
and the board game from Hasbro, Inc.

Original Music by Michael Holland

RATED G

March 20 – April 6, 2025

It's a whole new way to play the game! On a dark and stormy night in 1954, the gang's all here at Boddy Manor, showing their true colors as blackmail and bodies pile up. Was it Miss Scarlet in the ballroom with the revolver? Colonel Mustard in the conservatory with the candlestick? Professor Plum in the billiard room with the dagger? Mrs. Peacock in the library with the lead pipe? Do *you* have a clue? No matter whodunit, this murder mystery is frightfully fast-paced fun to die for...

MARCH/APRIL 2025

Thurs.

Fri.

Sat.

Sun.

20

21

22

23

27

28

29

30

3

4

5

6

7:30 p.m. • Fridays at 7:30 p.m. • Saturdays at 2 p.m. & 7:30 p.m. • Sundays at 2 p.m.

FLEX PASS/EXCHANGES: August 5, 2024 • ON SALE: February 17, 2025

DIVE IN!

Nickelodeon™

The SpongeBob Musical

RATED G



Based on the series by Stephen Hillenburg

Book by Kyle Jarrow

Original Songs by Yolanda Adams, Steven Tyler and Joe Perry of Aerosmith, Sara Bareilles, Jonathan Coulton, Alex Ebert of Edward Sharpe & The Magnetic Zeros, The Flaming Lips, Lady A, Cyndi Lauper, John Legend, Panic! At the Disco, Plain White T's, They Might Be Giants, T.I.

And Songs by David Bowie, Tom Kenny & Andy Paley

Additional Lyrics by Jonathan Coulton

Additional Music by Tom Kitt

Musical Production Conceived by Tina Landau

©2023 Viacom International Inc. All Rights Reserved. Nickelodeon, SpongeBob SquarePants and all related titles, logos and characters are trademarks of Viacom International Inc. Created by Stephen Hillenburg.

May 1-18, 2025

Who lives in a pineapple under the sea? SpongeBob SquarePants! In this hilarious musical based on the beloved animated series, the whole Bikini Bottom crew is here: Patrick the starfish, Squidward the octopus, Mr. Krabs, and more. And when a volcano threatens to erupt and destroy their undersea world, everyone must swim together to save the day. Colorful, creative, and brimming over with irresistible songs, this splashy show is a bright delight for all ages. Are you ready, kids? Ride the wave for the best day ever!

MAY 2025

Thurs.

Fri.

Sat.

Sun.

1

2

3

4

8

9

10

11

15

16

17

18

Thursdays at 7:30 p.m. • Fridays at 7:30 p.m. • Saturdays at 2 p.m. & 7:30 p.m. • Sundays at 2 p.m.

FLEX PASS/EXCHANGES: August 5, 2024 • ON SALE: March 31, 2025

SAVE THE DATES!

Check your **STANDING RESERVATION** show dates.

	Cinderella	Glass Menagerie	Daddy Long Legs	Clue	SpongeBob
○ 1st Thursday evenings:	Sept. 5	Nov. 7	Feb. 6	March 20	May 1
○ 1st Friday evenings:	Sept. 6	Nov. 8	Feb. 7	March 21	May 2
○ 1st Saturday matinees:	Sept. 7	Nov. 9	Feb. 8	March 22	May 3
○ 1st Saturday evenings:	Sept. 7	Nov. 9	Feb. 8	March 22	May 3
○ 1st Sunday matinees:	Sept. 8	Nov. 10	Feb. 9	March 23	May 4
○ 2nd Thursday evenings:	Sept. 12	Nov. 14	Feb. 13	March 27	May 8
○ 2nd Friday evenings:	Sept. 13	Nov. 15	Feb. 14	March 28	May 9
○ 2nd Saturday matinees:	Sept. 14	Nov. 16	Feb. 15	March 29	May 10
○ 2nd Saturday evenings:	Sept. 14	Nov. 16	Feb. 15	March 29	May 10
○ 2nd Sunday matinees:	Sept. 15	Nov. 17	Feb. 16	March 30	May 11
○ 3rd Thursday evenings:	Sept. 19	Nov. 21	Feb. 20	April 3	May 15
○ 3rd Friday evenings:	Sept. 20	Nov. 22	Feb. 21	April 4	May 16
○ 3rd Saturday matinees:	Sept. 21	Nov. 23	Feb. 22	April 5	May 17
○ 3rd Saturday evenings:	Sept. 21	Nov. 23	Feb. 22	April 5	May 17
○ 3rd Sunday matinees:	Sept. 22	Nov. 24	Feb. 23	April 6	May 18

Evenings 7:30 p.m. / Matinees 2 p.m.

Write down your FLEX PASS and ARTS FOR ALL show dates.

Flex Pass reservations begin August 5, 2024.

SEUSSIFICATION _____

GODSPELL _____

CINDERELLA _____

THE GLASS MENAGERIE _____

A TUNA CHRISTMAS _____

DADDY LONG LEGS _____

CLUE _____

THE SPONGEBOB MUSICAL _____

To exchange your tickets, please give us 24 hours' notice.

Call (352) 236-2274 during box office hours, or e-mail exchange@ocalacivictheatre.com.



4337 E. Silver Springs Blvd.
Ocala, FL 34470

RETURN SERVICE REQUESTED

NON-PROFIT
ORGANIZATION
U.S. POSTAGE
PAID
OCALA, FL
PERMIT 09



Florida
ARTS & CULTURE



LARGE
PRINT